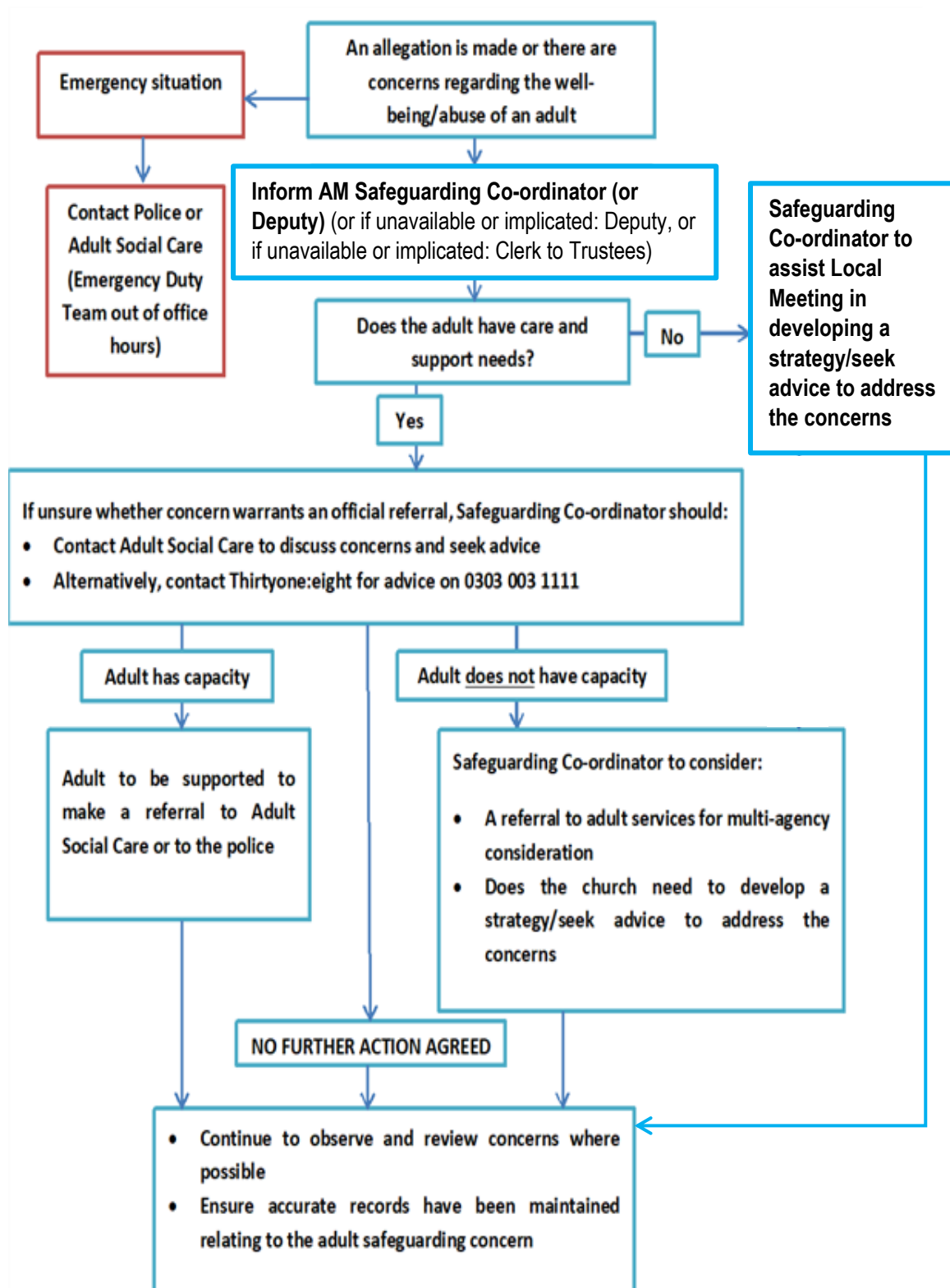


Flowchart B: in cases of concerns about an adult

An overview to be used with **Safeguarding Procedures Section 12. Responding to concerns.**



Legally, someone who lacks capacity cannot, due to an illness or disability such as a mental health problem, dementia or a learning disability, do the following:

- understand information given to them to make a particular decision
- retain that information long enough to be able to make the decision
- use or weigh up the information to make the decision
- communicate their decision.

Note that people of sound mind are allowed to make decisions which other people consider poor.